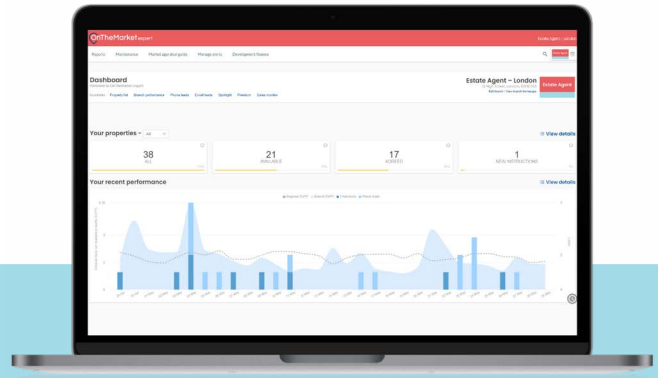


# OnTheMarket Expert

At OnTheMarket Expert you can log onto your account to upload and manage your properties, track your phone and email leads, access useful tools and guides, and much more! Visit our Help Centre today for further information and details.



## Key Features

### Admin

- Manage your logo and contact details
- Register your affiliations
- Link your social media accounts
- Fine tune your map location
- Enter your tenancy information

### Reporting

- Track phone and email leads
- Export call recordings and historic leads
- Monitor and compare the performance of your listings at OnTheMarket

### Upload listings

- Upload and manage your listings directly
- Our system updates quickly so you can review them instantly!
- Display your properties as Only With Us for a period of your choice before advertising on other portals to target serious property seekers at the very beginning of their home search

### Key tools

- Stay updated on market activity and opportunities in your local area with our Market Intel reports
- Create professional guides for valuation appointments with our market appraisal guide
- Use our Sales Monitor to track post-withdrawal sales to monitor potential lost fees

## Additional products

You can also access the following products via OnTheMarket Expert

- **Spotlight** and **Premium Display**
- **SmartMail**, a direct mail platform powered by Sprift
- A free image enhancement service powered by **Autoenhance.ai**
- Development finance solutions with **Brickflow** for your land and new homes departments



If you would like further OnTheMarket Expert information or training, please get in touch with our Technical Support team on 0808 1202 877 (option 3) or email [support@onthemarket.com](mailto:support@onthemarket.com)